

TS Series Multistage Centrifugal Pump



50Hz

Power: 0.18 - 2.2 kW

Head: Up to 34 M

Flow: Up to 250 L/min

60Hz

Power: 0.18 - 3.7 kW

Head: Up to 50 M

Flow: Up to 270 L/min

Outlet: 1" - 2"

Applications

The TS series are multistage centrifugal pumps suitable for pressure boosting applications such as increasing water pressure from city mains or private water systems. They are also suitable for other applications such as:

- Water circulation
- Liquid transfer
- Irrigation systems
- Lawn sprinkle systems
- Washing systems
- General purpose pumping

Operating Conditions

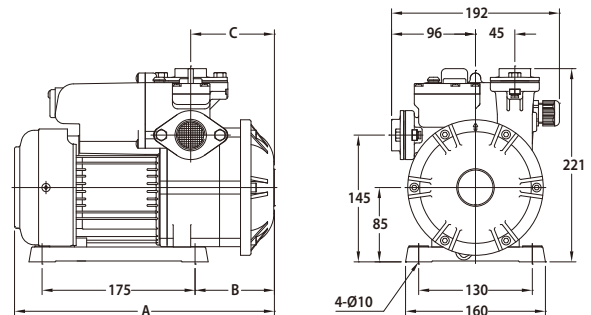
1. Ambient temperature: Max. +40°C
2. Liquid temperature: +4°C ~ +40°C
3. System Pressure : Max. 8.5 kg/cm²

Product Features

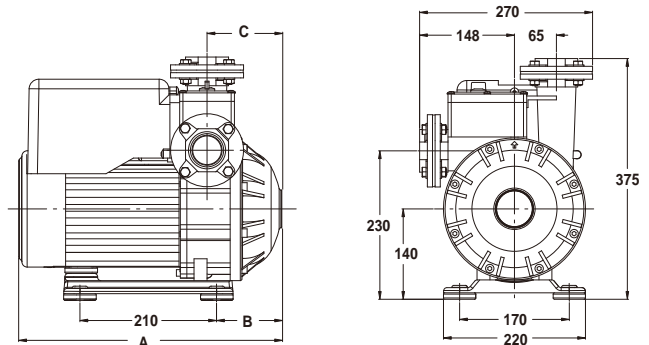
1. Multistage design provides steady, quiet and vibration-free operation for years of trouble-free service.
2. Close coupled, space saving design provides easy installation.
3. All parts in contact with water are made from corrosion resistant materials.
4. Capable of transferring both plain and salt water.
5. The pump is installed with thermostat protection switch to protect against dry running. The pump will shut off when water temperature exceeds 130° F (55° C). (TS400 /800 only)
6. The motor has a built-in thermal overload to protect against high operating temperatures and over current (Single phase motor only)
7. The pumps will lift water up to 7.6m. with foot valve and pump suction piping filled with water

Dimensions

TS400 / 800

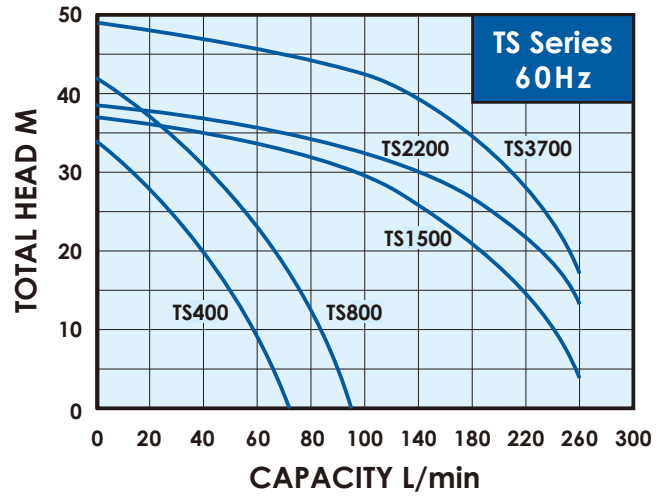
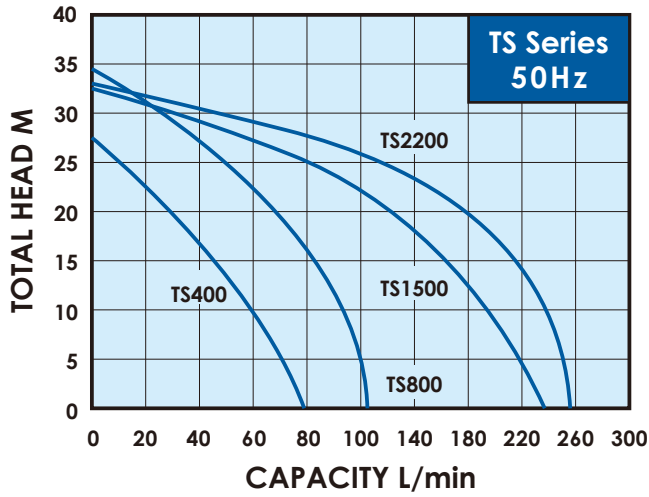


TS1500 / 2200 / 3700




Model	Cycle (Hz)	A (mm)	B (mm)	C (mm)
TS400	50	305	99	104
	60	297	91	96
TS800	50 / 60	352	99	104
TS1500/2200	50 / 60	405	101	116
TS3700	60	405	101	116


Performance curve



Specification, 50Hz

Model	Power (kW)	Cycle (Hz)	Phase (Ø)	Voltage (V)		Amp's (A)		Inlet (in.)	Outlet (in.)	H max. (m)	Q max. (L/min)	N.W. (kg)	
TS400	0.37	50	1	200-240		3.0		1"	1"	30	75	8	36
TS800	0.75	50	1	200-240		4.4		1"	1"	35	100	11	30
TS1500	1.5	50	1	200-240		7.2		2"	2"	32	230	26	18
			3	200-240	380-440	6.2	3.5	2"	2"	32	230	26	18
TS2200	2.2	50	1	200-240		11.1		2"	2"	34	250	27	18
		50	3	200-240	380-440	9.0	4.5	2"	2"	34	250	27	18

Specification, 60Hz

Model	Power (kW)	Cycle (Hz)	Phase (Ø)	Voltage (V)		Amp's (A)		Inlet (in.)	Outlet (in.)	H max. (m)	Q max. (L/min)	N.W. (kg)	
TS400	0.37	60	1	110/220		6.0/3.0		1"	1"	35	70	8	36
TS800	0.75	60	1	110/220		11/5.5		1"	1"	42	95	11	30
TS1500	1.5	60	1	220		9.5		2"	2"	38	265	26	18
			3	220	380	6.5	4.2	2"	2"	38	265	26	18
TS2200	2.2	60	3	220	380	9.5	5.2	2"	2"	39	270	27	18
TS3700	3.7	60	3	220	380	13.8	6.8	2"	2"	50	270	29	18