

# TQC Series Automatic Flow-Controlled Pump



**Power:** 0.18 - 0.75 kW

**50Hz**

**Head:** Up to 3.5 kg/cm<sup>2</sup>

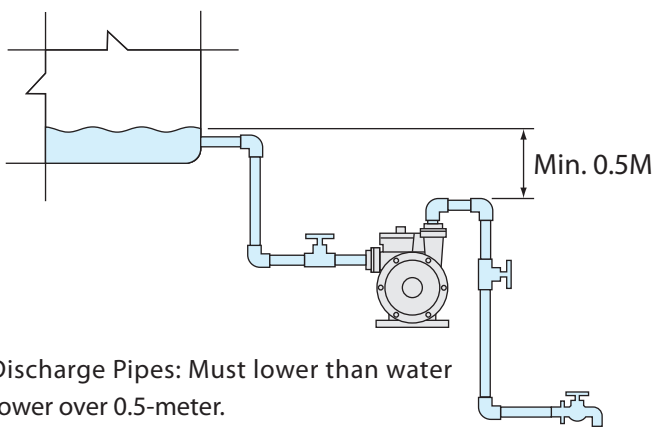
**Flow:** Up to 95 L/min

**60Hz**

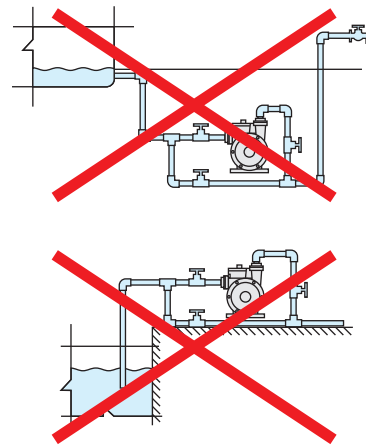
**Head:** Up to 4.4 kg/cm<sup>2</sup>

**Flow:** Up to 90 L/min

**Outlet:** 1"



Discharge Pipes: Must lower than water tower over 0.5-meter.



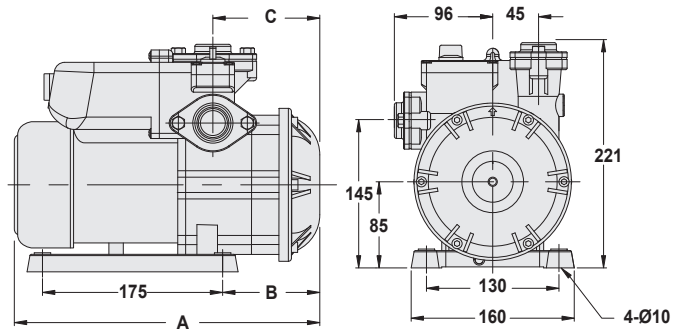
## Product Features

1. This TQC series most suitable to Install it below the water tower, to downward pressurization, When using the water; the pump will automatically start increase the pressure to supply water, when stop using the pump will automatically stop supply power and water.
2. Compact design and quiet operation make the TQC series suitable for many applications.
3. The TQC is constructed from the top quality corrosion resistant materials.
4. The motor has built-in thermal overload to protect against high operating temperatures and over current.

## Operating Conditions

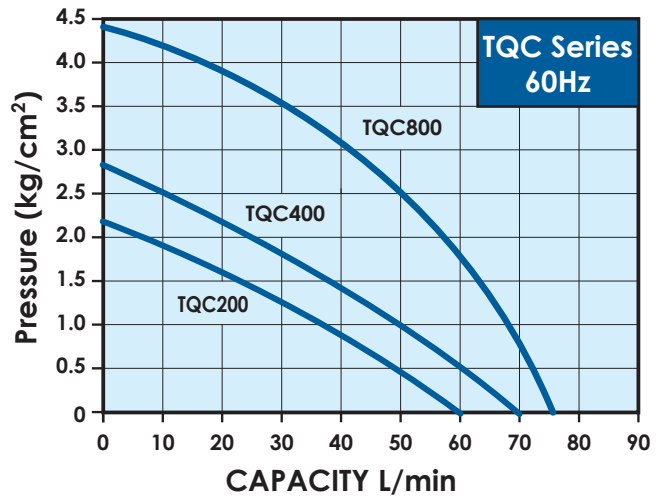
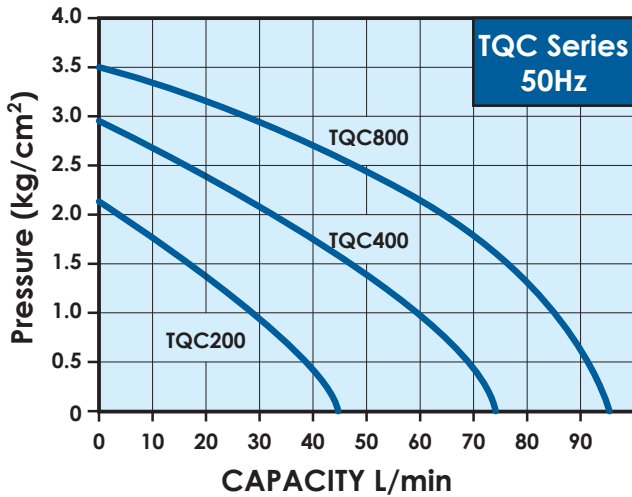
1. Ambient temperature: Max. +40°C
2. Liquid temperature: + 4°C ~ + 40°C
3. Pressure Range : Max. 6kg/cm<sup>2</sup>
4. Suction Pipes: Must run in positive pressure only a negative pressure unable to work the pump.
5. Discharge Pipes: Must lower than water tower over 0.5-meter.

## Dimensions




Model	Cycle (Hz)	Dimensions (mm)		
		A	B	C
TQC200	50	297	91	96
	60	273	67	72
TQC400	50	306	99	104
	60	280	73	78
TQC800	50/60	352	99	104


## Performance curve:



## Specification, 50Hz

Model	Power (kW)	Cycle (Hz)	Phase (∅)	Voltage (V)	Amp's (A)	Inlet (in.)	Outlet (in.)	P max. (kg/cm <sup>2</sup> )	Q max. (L/min)	N.W. (kg)	
TQC200	0.18	50	1	200~240	1.5	1"	1"	2.2	45	6.4	36
TQC400	0.37	50	1	200~240	3	1"	1"	3.0	75	8.2	36
TQC800	0.75	50	1	200~240	4.4	1"	1"	3.5	75	10.4	30

## Specification, 60Hz

Model	Power (kW)	Cycle (Hz)	Phase (∅)	Voltage (V)	Amp's (A)	Inlet (in.)	Outlet (in.)	P max. (kg/cm <sup>2</sup> )	Q max. (L/min)	N.W. (kg)	
TQC200	0.18	60	1	110/220	4.0/2.0	1"	1"	2.2	60	6.4	36
TQC400	0.37	60	1	110/220	6.0/3.0	1"	1"	2.8	70	8.2	36
TQC800	0.75	60	1	110/220	11/5.5	1"	1"	4.4	75	11.0	30